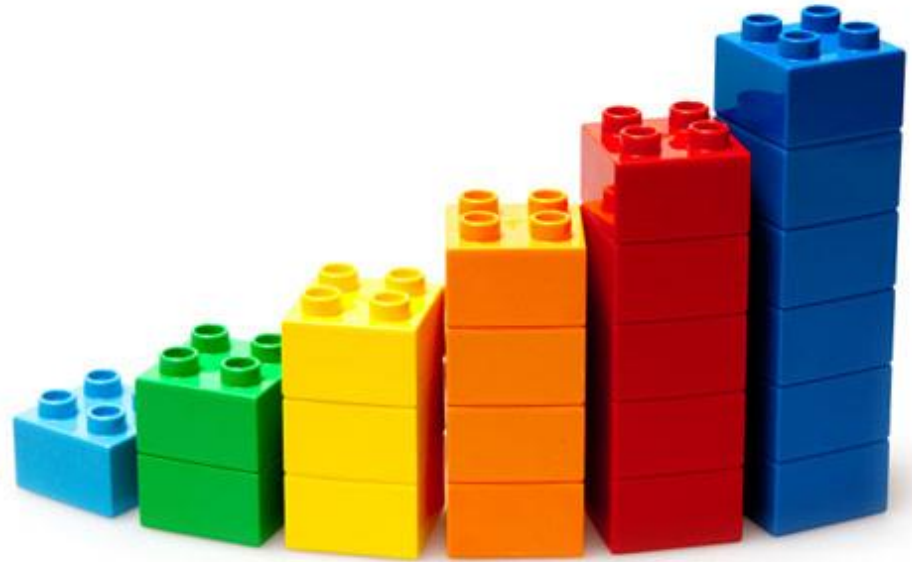


# BUILDING FOR THE FUTURE

giving your employees the tools to develop and grow



## What is an FSO (Financial Services Office)

2016 DDI User Group Conference



# Discussion Topics

- Definition of FSO
- Example FSO styles
- FSO functionality in DDI-Connect™



# Financial Services Office

A consolidation of multiple accounting and data processing sites into one.

# Financial Services Office Benefits

- Centralize practices
- Cuts cost of department/branch/regional offices
- Ability to provide better services to constituents
- Better efficiency
- One financial software

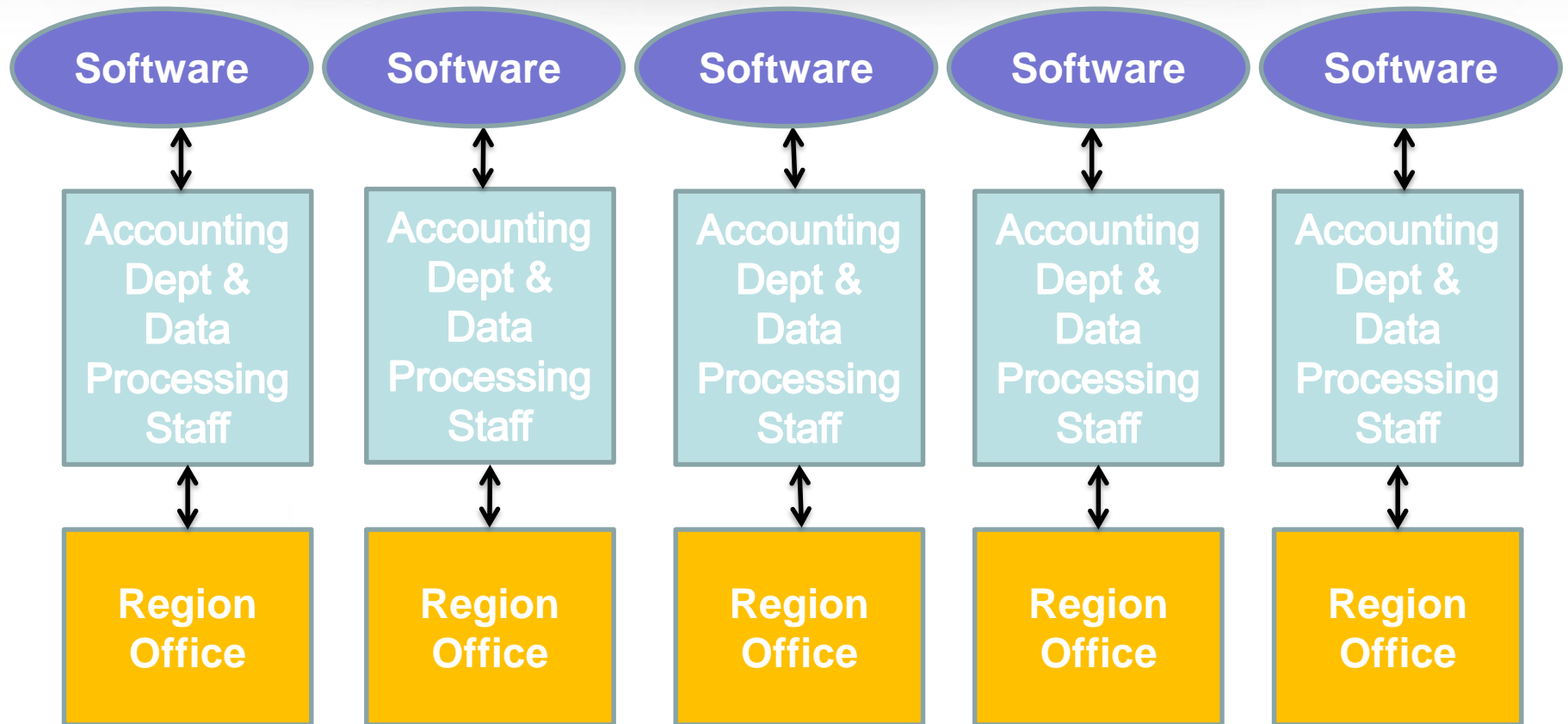


# Why are we discussing it

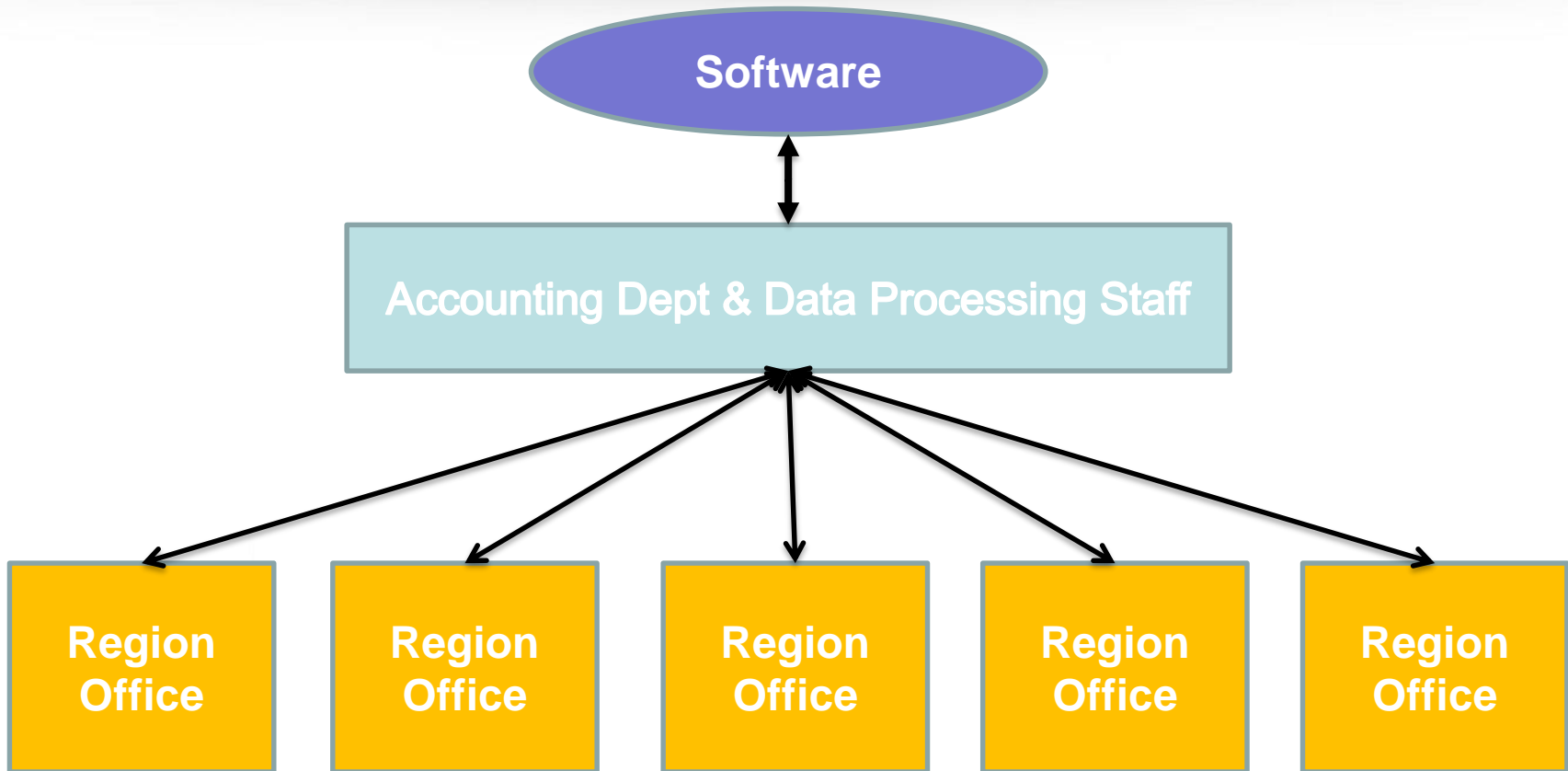
- DDI Client Inquiry
- Implemented an FSO in 2016
- DDI-Connect™ Capabilities



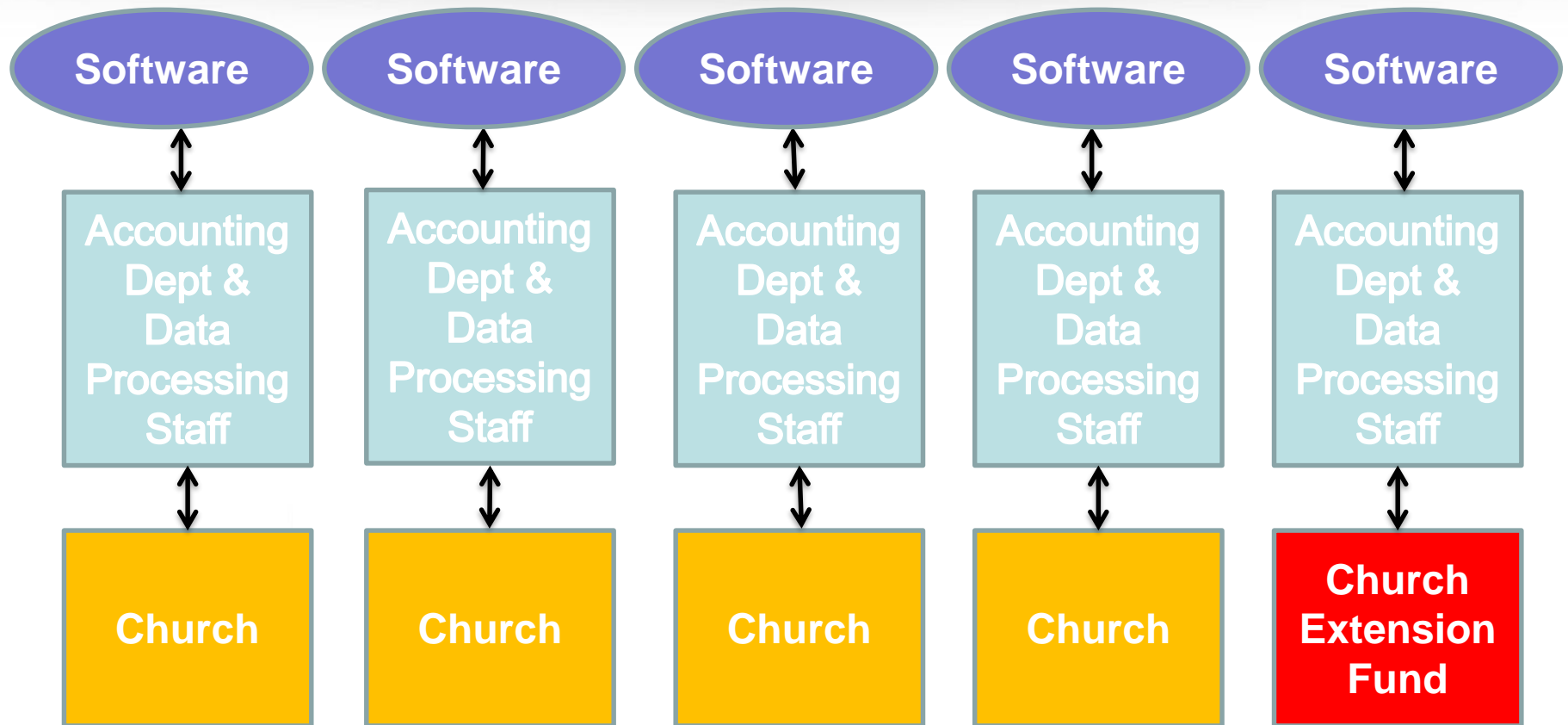
# Before Financial Services Office



# After Financial Services Office

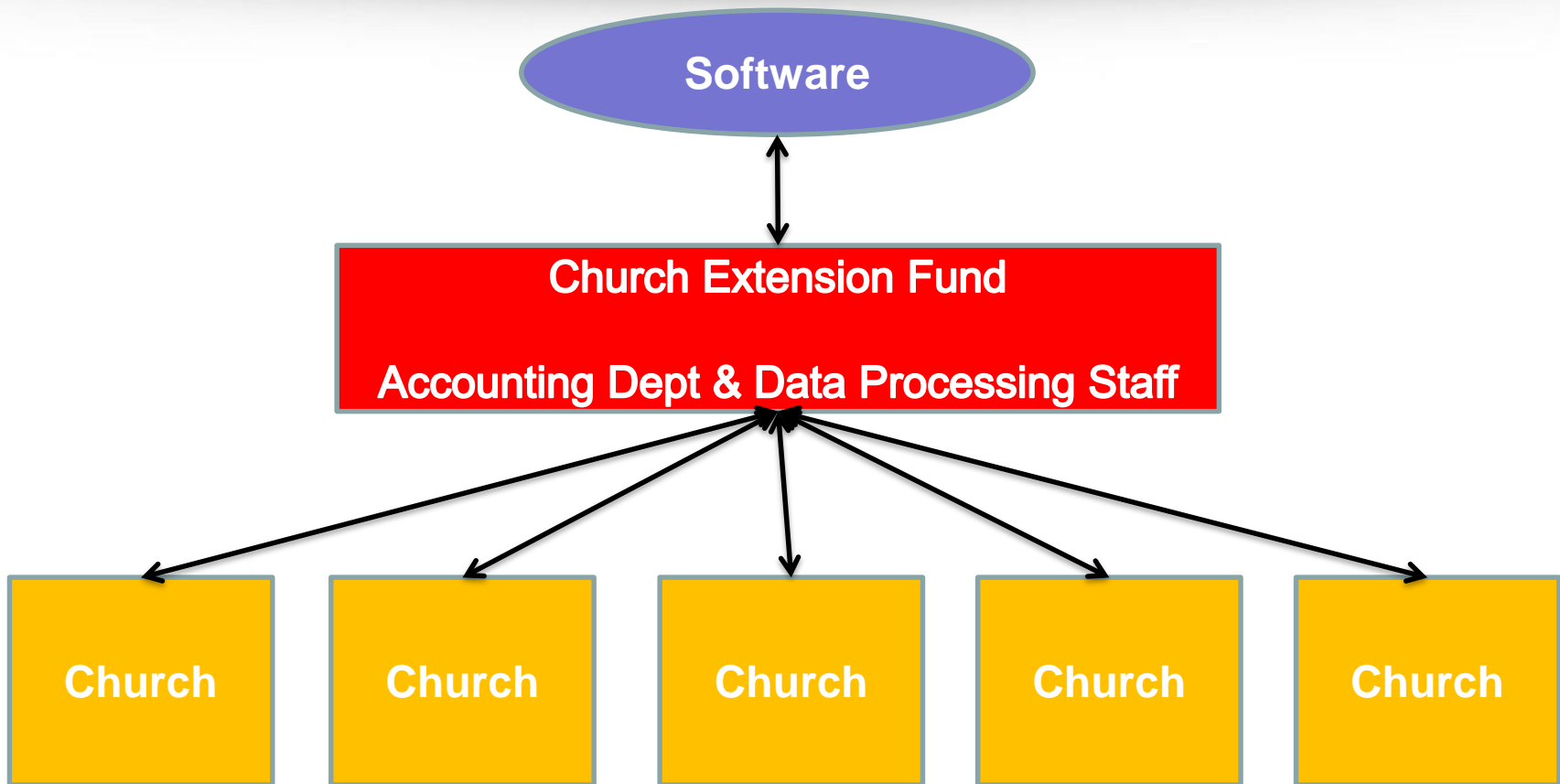


# Before Financial Services Office

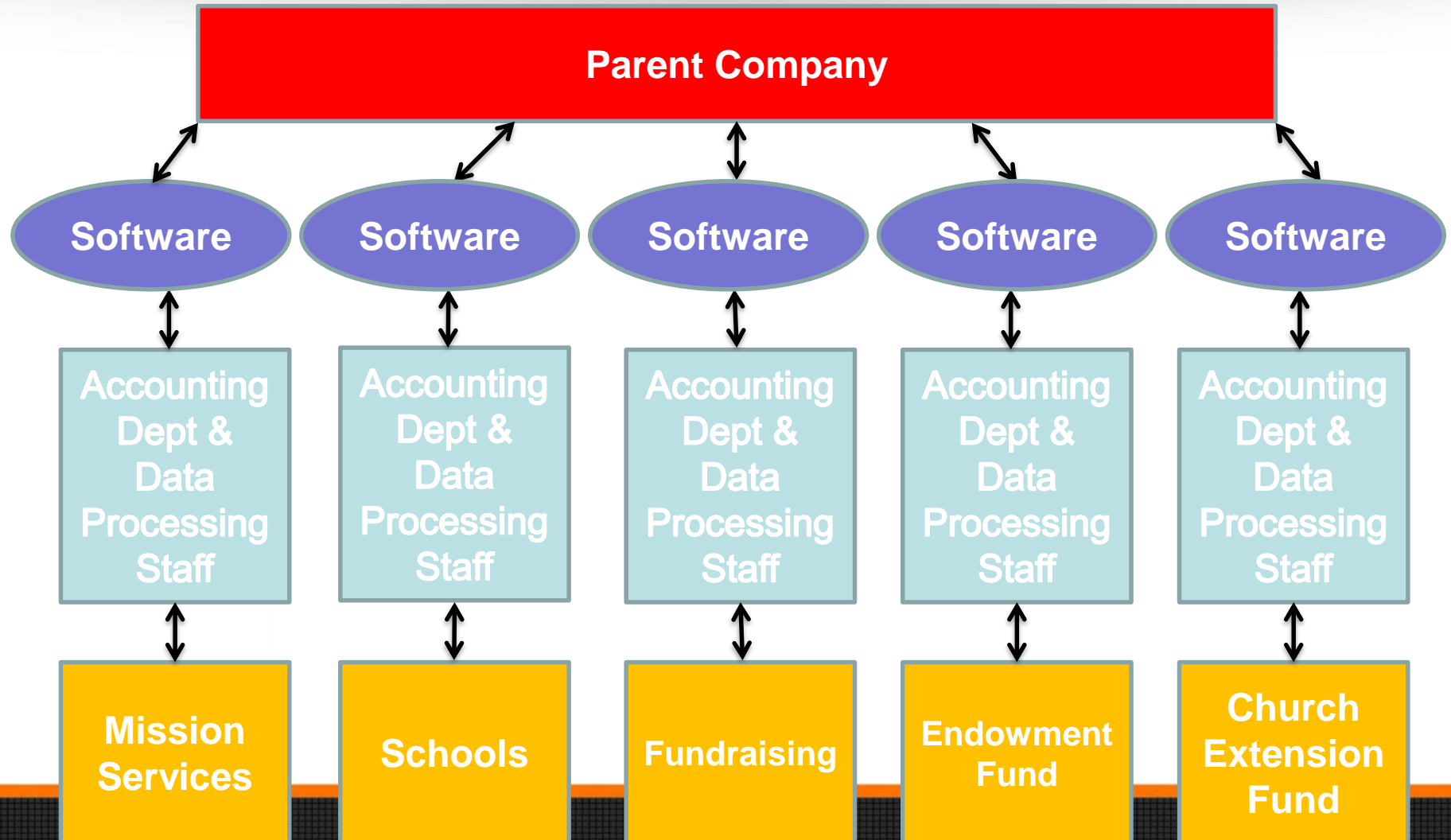




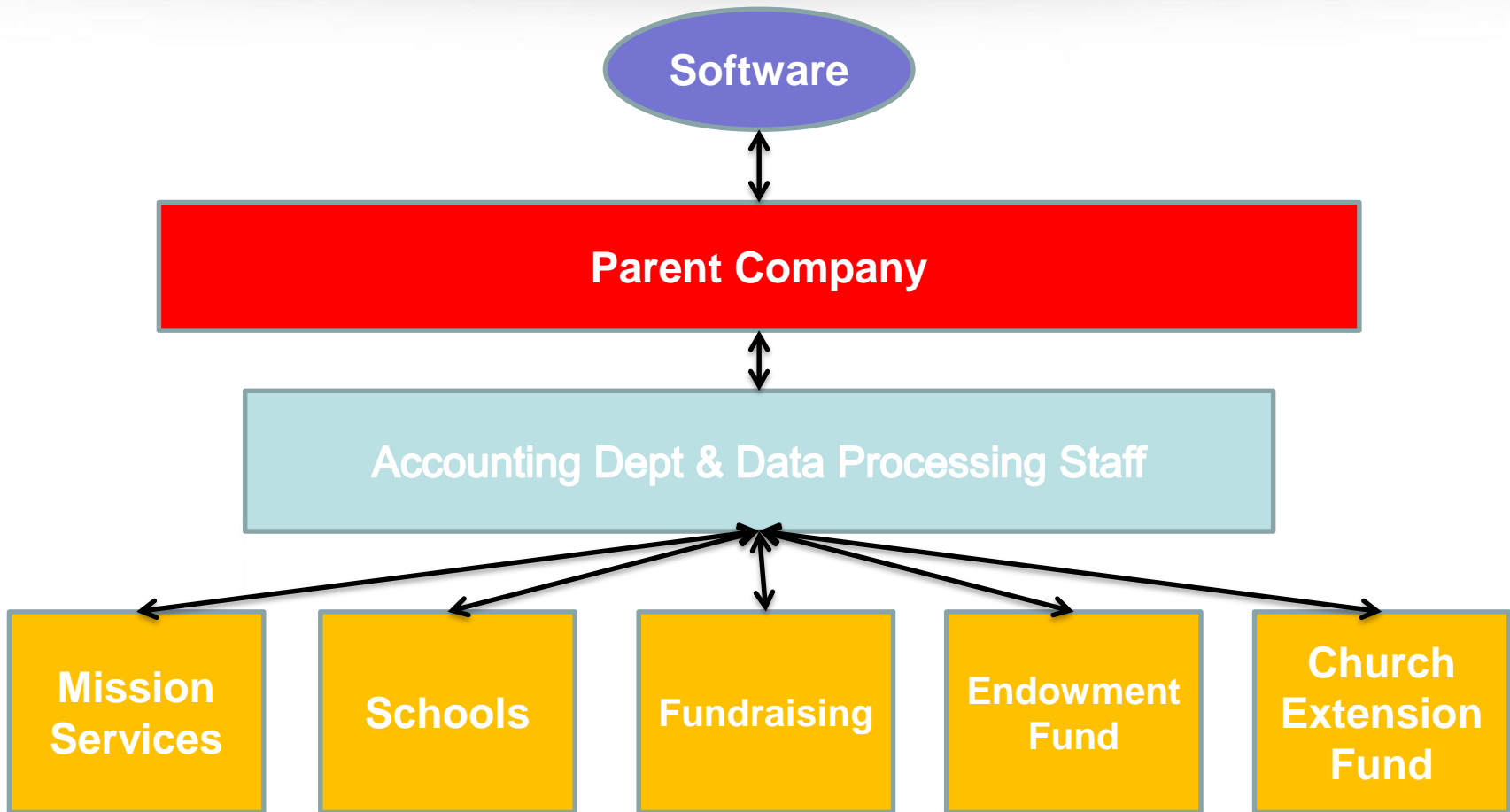
# After Financial Services Office



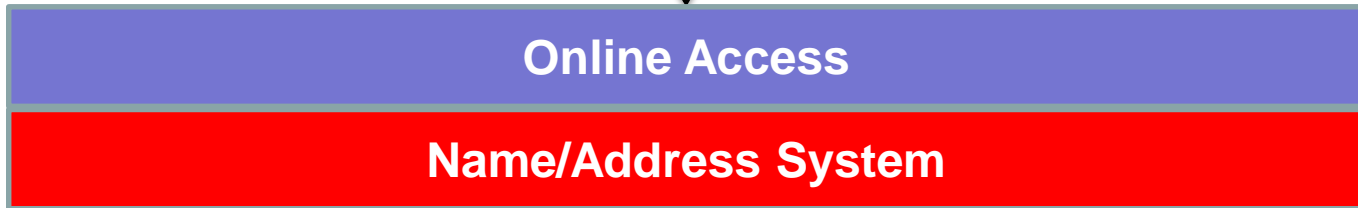
# Before Financial Services Office



# After Financial Services Office



# DDI-Connect™ Structure





# DDI-Connect™ Entities

- Entity: A company that has separate financials and gift processing, but share a common Name/address system.
  - GL structure needs to be the same between entities.
  - Fund Accounting is fully enabled with entities.



# DDI-Connect™ Entities

The screenshot displays the DDI-Connect software interface. On the left is a navigation tree with a 'Main Menu' containing various options like 'Name/Address System', 'Project Management', and 'FundWriter'. The 'FundWriter' sub-menu is expanded, showing options such as 'G/L Account Inquiry', 'General Journal Entry', and 'Chart of Accounts Entry'. The 'Chart of Accounts Entry' option is highlighted. The main window shows a 'CE Chart of Accounts for 2015' with a search bar and a table of G/L Accounts. The table lists categories: ASSETS, LIABILITIES AND FUND BALANCES, REVENUE, and EXPENSE. A 'Select Entity' dialog box is open, showing a list of entities: CE (Church Extension), DDI (DDI Extension Fund), HOPE (Entity 3), and PAR (Entity 4). The 'CE' entity is selected. A red arrow points from the 'Entity: CE' field in the status bar at the bottom to the 'CE' entity in the dialog box. Another red arrow points from the 'CE Chart of Accounts for 2015' title to the 'CE' entity in the dialog box.

File Dashboard Window Admin Help

Main Menu

- Name/Address System
- Extract Module
- Project Management
- Financial Services
- Merge Forms System
- CheckWriter
- Fixed Assets
- FundWriter
  - G/L Account Inquiry
  - General Journal Entry
  - General Journal Inquiry
  - Recurring Journal Entry
  - Misc. Receipts Entry
  - Prior Period Journal Entry
  - Journal Template Entry
  - FW Name/Address Entry
  - Approve Journal Documents
  - Approve Misc. Receipts
  - Approve Prior Period Journals
  - Bank Reconciliation
  - Process Recurring Journals
  - Post Transactions
  - Administrative Tasks
  - Reports
  - Setup
    - Chart of Accounts Entry
    - Closing Account Maintenance
    - Codes Maintenance
    - Entity Codes Maintenance
    - FundWriter Setup
    - Fiscal Year Setup
    - Fund Accounting Setup
    - G/L Account Allocations
    - G/L Account Segment Entry
    - G/L Code Set Editor
    - G/L Group Setup
    - Import G/L Accounts
    - Load Budget Spreadsheet
    - Close Period/Year

Chart of Accounts Entry

CE Chart of Accounts for 2015

Search for accounts that match:

G/L Account	Description
<b>ASSETS</b>	
TOTAL ASSETS	
<b>LIABILITIES AND FUND BALANCES</b>	
TOTAL LIABILITIES AND FUND BALANCES	
<b>REVENUE</b>	
TOTAL REVENUE	
<b>EXPENSE</b>	
TOTAL EXPENSE	
NET INCOME	

Select Entity

Entity	Description
CE	Church Extension
DDI	DDI Extension Fund
HOPE	Entity 3
PAR	Entity 4

Entity: CE

FW02 Org: 901 DEMOC Entity: CE Business dt: 06/22/2015 FY: 2015

# DDI-Connect™ Entities

DDI Demo for Church Extension Funds

File Window Help

Add Edit Delete Exit

### Entity Codes Maintenance

ID	Code	Org	Description
01	CE	901	Church Extension
03	DDI	901	DDI Extension Fund
04	HOPE	901	Entity 3
05	PAR	901	Entity 4

User ID	Name	CE	DDI	HOPE	PAR
agomez	Al Gomez	●	Ⓞ	●	●
appsrv901	AppServer for DEMOCEF				
batch	Batch processing	●	Ⓞ	●	●
bcarlisle	Bob Carlisle	●	Ⓞ	●	●
cbrown	Courtenay Brown	●	Ⓞ	●	●
eclipse	DDI Marketing User				
jallen	John Allen	●	Ⓞ	●	●
jvillalon	Joseph Villalon				
kbieda	Kyle Bieda	●	Ⓞ	●	●
pbostic	Pam Bostic	●	Ⓞ	●	●
pmchugh	Patrick McHugh	●	Ⓞ	●	●
rcoleman	Regina Coleman				
rdroeger	Rebecca Droeger	●	Ⓞ	●	●
tambler	Tom Ambler	●	Ⓞ	●	●
thlarkwelder	Toni Blarkwelder	●	Ⓞ	●	●

FW08 Org: 901 DEMOCE Entity: CE Business dt: 06/22/2015 FY: 2015 CAPS

# DDI-Connect™ Entities Gift Entry & Reporting

- Gifts are entered and tracked on separate entities
- ACH files, checks, & positive pay files are by entity
- Reports and statements are separate by entity



# DDI-Connect™ Accounts Payable

- Entity staff can enter vouchers
- Attach supporting documentation
- Approvals at either level
- Restrict access to specific entity
- Generate their own financials



# DDI-Connect™ Online

- 1 Online System
- Any constituent regardless of entity can access online for transaction history and electronic statements



# Next Steps

- Discovery Meeting
- Demo of DDI-Connect™
- Implementation Estimate



# Next Generation of DDI-Connect™

- FSO Programs in the next generation of DDI-Connect™
- Program Capability
- No added time to overall rollout





# Discussion, Questions, Comments

Patrick McHugh

[pmchugh@ddi.org](mailto:pmchugh@ddi.org)

317.713.2472

Tom Ambler

[tambler@ddi.org](mailto:tambler@ddi.org)

317.713.2476

