



Dazzle your Data Analytics with DDI's Digital Dashboard

2014 DDI User Group Meeting
April 22-23, 2014



Serving those who serve others



Show of Hands:

Who here displays their organizations data graphically some how?



Share:

Can anyone provide some examples?



What is a Dashboard?

Dashboards provides at-a-glance views of KPIs (key performance indicators) relevant to a particular objective or business process.





Tips for Creating a Dashboard:

- ❑ Clarify the purpose of the dashboard
- ❑ Identify good KPI's
- ❑ Dashboards supplement your analytic reports, **not** replace them.
- ❑ Educate Stakeholders
- ❑ Layout the dashboard with purpose
- ❑ Maintain





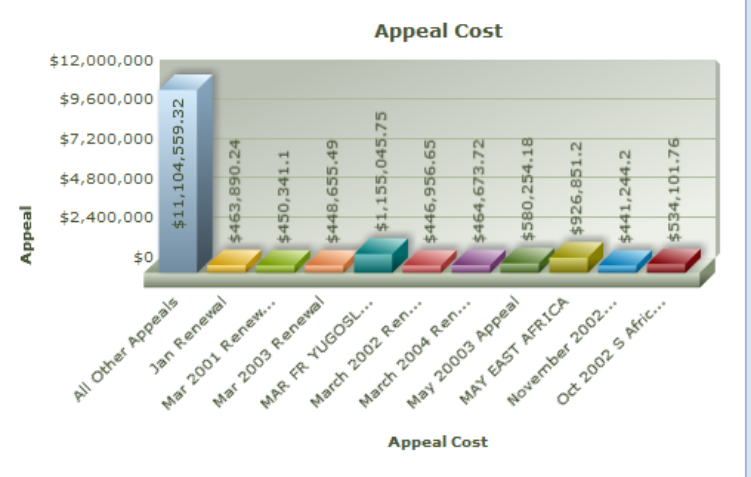
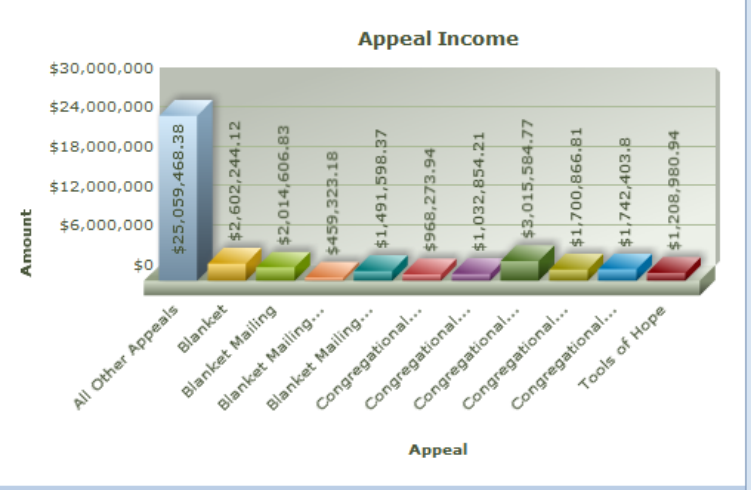
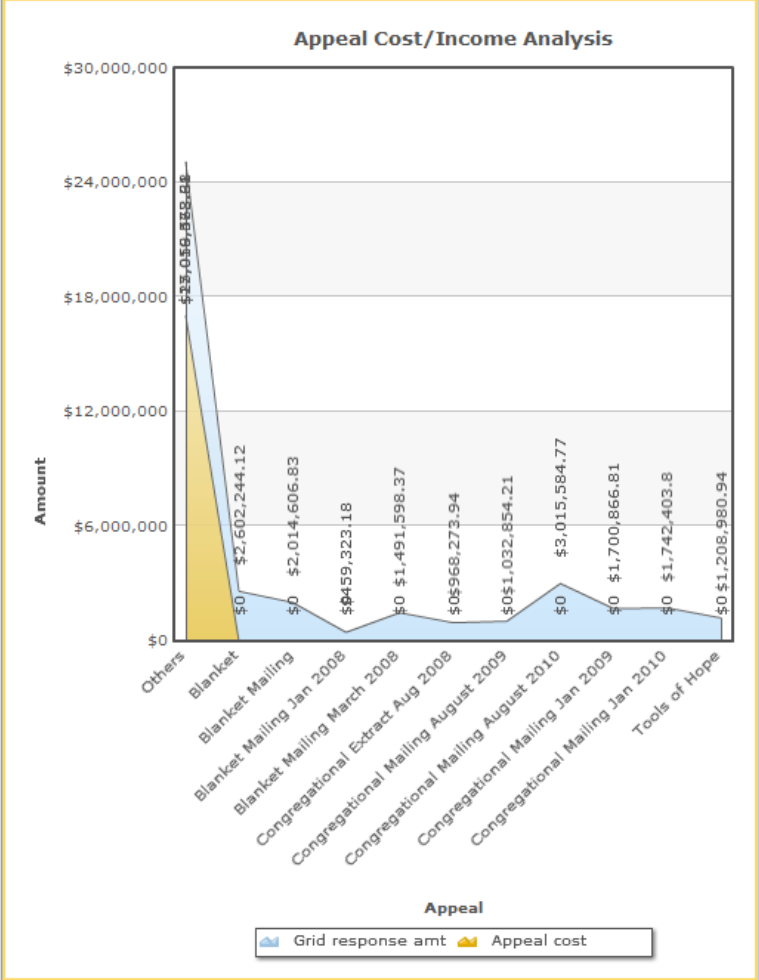
Benefits of DDI's Digital Dashboard

- ❑ Customizable to different stake holders
- ❑ Ability to drill into details
- ❑ Trending visibility
- ❑ Time Savings
- ❑ Constant real-time data flow
- ❑ Unlimited Dashboards
- ❑ Access from Anywhere
- ❑ Affordable Cost

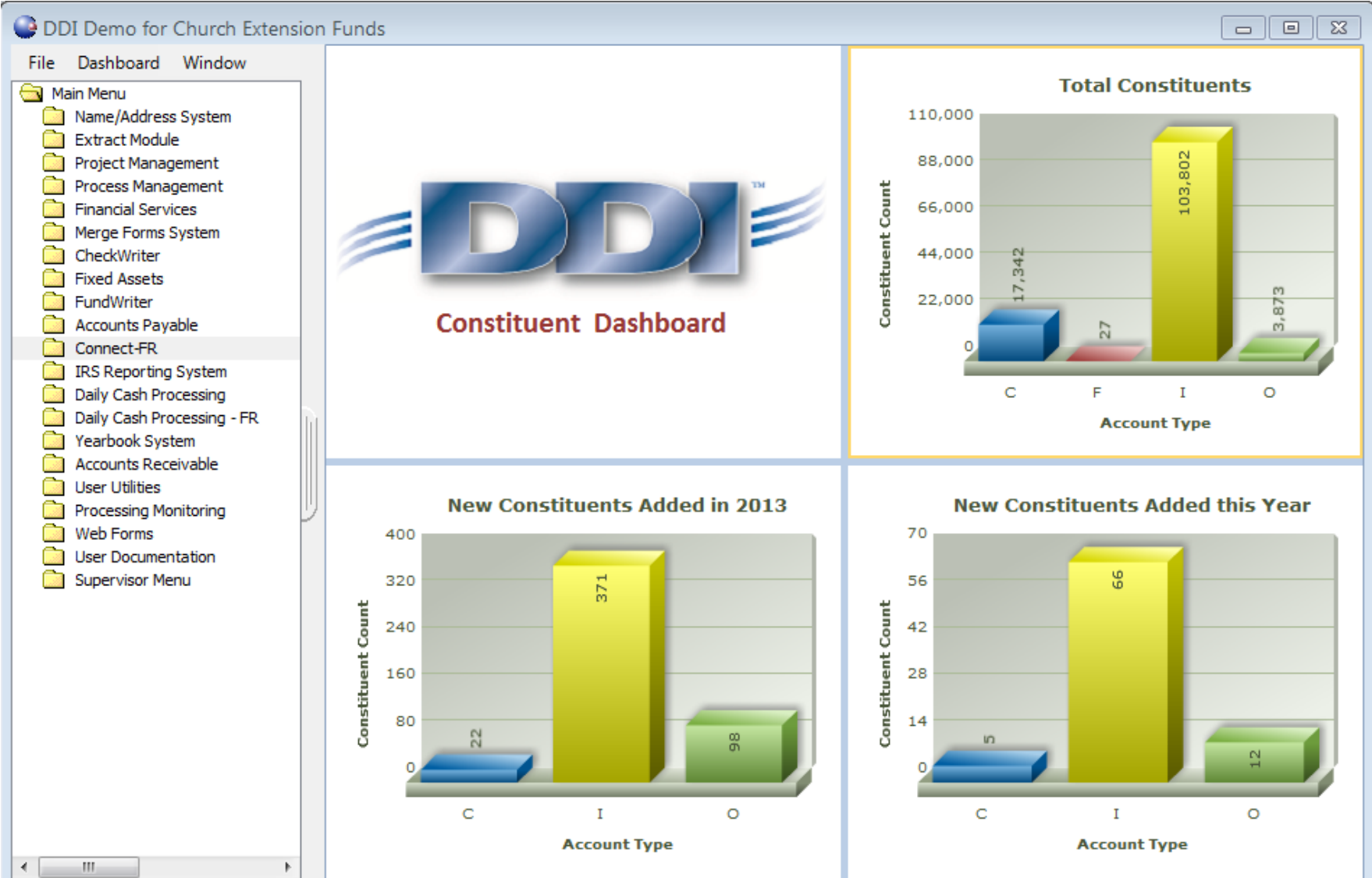


Appeal Data

- File Dashboard Window
- Main Menu
 - Name/Address System
 - Extract Module
 - Project Management
 - Process Management
 - Merge System
 - Fixed Assets
 - FundWriter
 - Daily Cash Processing
 - Connect-FR
 - Government Grants
 - CheckWriter
 - Accounts Payable
 - Accounts Receivable
 - Order Entry
 - Inventory
 - User Documentation
 - Tracker
 - IRS Reporting System
 - Web Forms
 - User Utilities
 - Supervisor Menu
 - Programmer Menu



Constituent Data



Donor Data

DDI Demo for Church Extension Funds

File Dashboard Window

Main Menu

- Folder Name/Address System
- Folder Extract Module
- Folder Project Management
- Folder Process Management
- Folder Financial Services
- Folder Merge Forms System
- Folder CheckWriter
- Folder Fixed Assets
- Folder FundWriter
- Folder Accounts Payable
- Folder Connect-FR
- Folder IRS Reporting System
- Folder Daily Cash Processing
- Folder Daily Cash Processing - FR
- Folder Yearbook System
- Folder Accounts Receivable
- Folder User Utilities
- Folder Processing Monitoring
- Folder Web Forms
- Folder User Documentation
- Folder Supervisor Menu



2014 Donations Goal = \$3,000,000.00

Gift Amount YTD



Gift Year	Gift Amount YTD
2011	\$1,387,163.64
2012	\$3,741,213.09
2013	\$1,470,190.59
2014	\$80,574.58

New Donor Since 2013 Average First Donation Amount



Donor State	First Gift Amount
AZ	\$23,94
CA	\$114,18
CO	\$20
FL	\$55,55
GA	\$120,6
IA	\$17,640,36
IL	\$1,667,35
IN	\$549,43
KS	\$51,24
KY	\$57,63
LA	\$12,515,8
MD	\$29,96
MO	\$279,69
NC	\$528,4
NE	\$9,893,34
OH	\$1,033,07
OK	\$33,33
PA	\$7,768,47
PR	\$79,41
TN	\$150
TX	\$254
WA	\$62
WV	\$50

New Donor Since 2013 Total First Gift Amount by Region



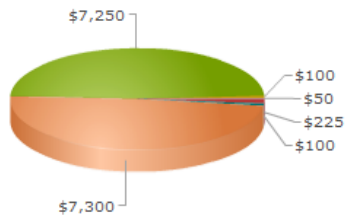
Region	Total First Gift Amount
03	\$17,640.36
05	\$87,48
06	\$172,89
09	\$1,328.46
10	\$9,893.34
11	\$1,585.21
14	\$5,165.33
15	\$7,788.47
16	\$300
17	\$1,245
18	\$186
25	\$25,031.6
26	\$8,336.77
28	\$120.6
34	\$166.66
36	\$59.92
37	\$277.55
39	\$1,350
44	\$6,043.68
45	\$120.6
50	\$166.66
51	\$59.92
63	\$277.55

DDIMAIN Org: 901 DEMOCE Business dt: 03/17/2014 FY: 2013
CAPS

Gift Data

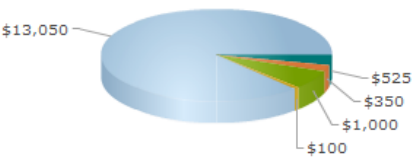
- File Dashboard Window
- Main Menu
 - Name/Address System
 - Extract Module
 - Project Management
 - Process Management
 - Merge System
 - Fixed Assets
 - FundWriter
 - Daily Cash Processing
 - Connect-FR
 - Government Grants
 - CheckWriter
 - Accounts Payable
 - Accounts Receivable
 - Order Entry
 - Inventory
 - User Documentation
 - Tracker
 - IRS Reporting System
 - Web Forms
 - User Utilities
 - Supervisor Menu
 - Programmer Menu

Current Year Gifts by Region



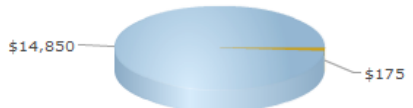
GM GP IL IN MI PN

Current Year Gifts by Designation Code 1



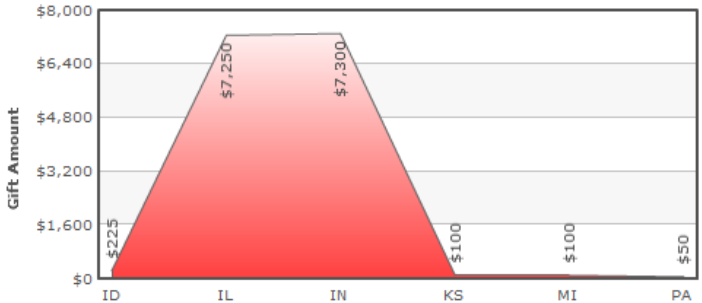
6259 627W AFRI UNDE

Current Year Gifts by Promo Code



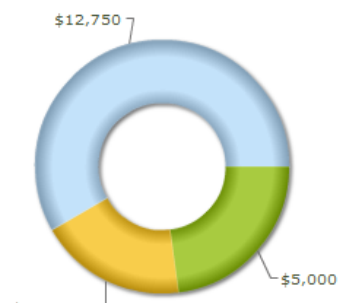
AT

Current Year Gifts by State



Gift amount group

Current Year Gift by Type




E G M

Investment Data

DDI Demo for Church Extension Funds
File Dashboard Window

Main Menu

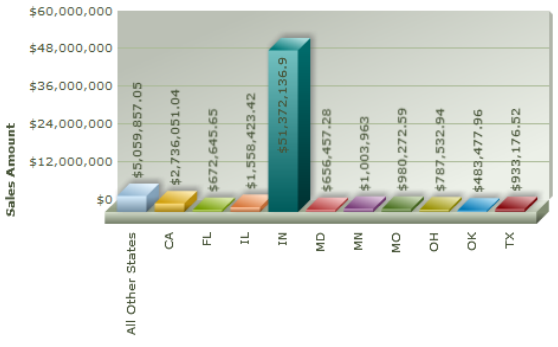
- Name/Address System
- Extract Module
- Project Management
- Process Management
- Financial Services
- Merge Forms System
- CheckWriter
- Fixed Assets
- FundWriter
- Accounts Payable
- Connect-FR
- IRS Reporting System
- Daily Cash Processing
- Daily Cash Processing - FR
- Yearbook System
- Accounts Receivable
- User Utilities
- Processing Monitoring
- Web Forms
- User Documentation
- Supervisor Menu



Year	Goal Investment Amount	Total Investment Amount	+/-
2011	\$140,000,000.00	\$138,999,501.55	\$-1,000,498.45
2012	\$145,000,000.00	\$146,250,555.12	\$1,250,555.12
2013	\$149,500,000.00	\$152,680,900.85	\$3,180,900.85
2014	\$156,000,000.00	\$155,833,900.00	\$-166,100.00

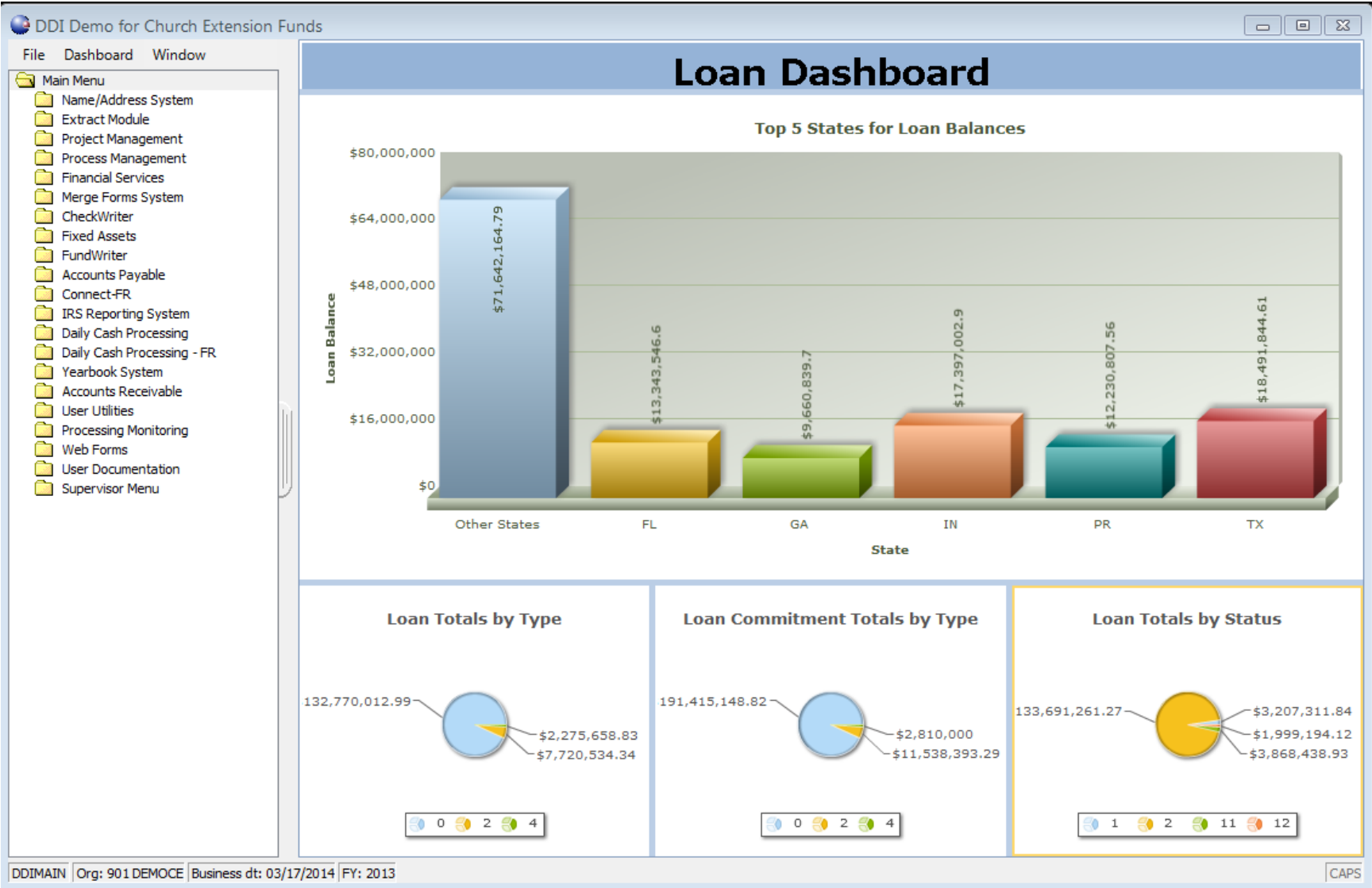
Invest t	All Investment Types				Total			
	State	Sales Amt	Redemption Amt	Extension Amt	Transfer Amt	Sales Amt	Redemption Amt	Extension Amt
AK	\$2,000	0	39,771.74	0	\$2,000	0	39,771.74	0
AL	\$2,000	43,128.55	355,169.83	40,187.74	\$2,000	43,128.55	355,169.83	40,187.74
AR	\$0	311,353.48	0	0	\$0	311,353.48	0	0
AZ	\$380,103.71	393,228.66	658,709.75	52,934.56	\$380,103.71	393,228.66	658,709.75	52,934.56
CA	\$2,736,051.04	4,722,931.87	2,036,462.51	1,422,066.25	\$2,736,051.04	4,722,931.87	2,036,462.51	1,422,066.25
CO	\$214,604.76	939,108.73	747,302.48	574,718.77	\$214,604.76	939,108.73	747,302.48	574,718.77
DC	\$380,000	662,306.03	27,027.32	100,000	\$380,000	662,306.03	27,027.32	100,000
FL	\$672,645.65	1,001,775.15	1,474,181.54	654,114.79	\$672,645.65	1,001,775.15	1,474,181.54	654,114.79
GA	\$244,218.82	449,458.15	1,015,513.46	857,403.62	\$244,218.82	449,458.15	1,015,513.46	857,403.62
HI	\$0	1,881.85	350.21	65,000	\$0	1,881.85	350.21	65,000
IA	\$140,508.03	1,009,744.33	1,926,569.89	1,500,686.21	\$140,508.03	1,009,744.33	1,926,569.89	1,500,686.21
ID	\$187,823.87	2,678.85	259,672.79	124,151.13	\$187,823.87	2,678.85	259,672.79	124,151.13
IL	\$1,558,423.42	1,163,984.31	1,266,733.54	746,648.86	\$1,558,423.42	1,163,984.31	1,266,733.54	746,648.86
IN	\$51,372,136.9	55,462,162.35	12,158,225.15	10,703,194.27	\$51,372,136.9	55,462,162.35	12,158,225.15	10,703,194.27
KS	\$457,357.97	743,323.84	1,947,580.2	1,219,622.42	\$457,357.97	743,323.84	1,947,580.2	1,219,622.42
KY	\$322,656.69	418,653.67	749,030.65	467,667.99	\$322,656.69	418,653.67	749,030.65	467,667.99
LA	\$0	432,958.3	82,343.15	74,707.24	\$0	432,958.3	82,343.15	74,707.24
MA	\$20,500	2,048.52	5,067.39	21,559.4	\$20,500	2,048.52	5,067.39	21,559.4
MD	\$656,457.28	711,041.52	1,359,444.58	338,398.97	\$656,457.28	711,041.52	1,359,444.58	338,398.97
MI	\$53,000	64,695.41	900,348.87	122,257.3	\$53,000	64,695.41	900,348.87	122,257.3
MN	\$1,003,963	0	19,328.87	0	\$1,003,963	0	19,328.87	0
MO	\$980,272.59	1,107,120.67	2,953,684.3	797,035.02	\$980,272.59	1,107,120.67	2,953,684.3	797,035.02
MS	\$0	18,000	12,658.32	37,896.92	\$0	18,000	12,658.32	37,896.92
MT	\$10,635.87	7,966.06	217,532.51	0	\$10,635.87	7,966.06	217,532.51	0
NC	\$454,608.33	586,877.2	825,974.42	421,918.73	\$454,608.33	586,877.2	825,974.42	421,918.73
NE	\$442,851.43	242,073.35	407,602.75	87,368.65	\$442,851.43	242,073.35	407,602.75	87,368.65
NM	\$17,788	42,758.29	399,840.95	53,576.05	\$17,788	42,758.29	399,840.95	53,576.05
NV	\$93,926.95	105,427.42	80,605.35	0	\$93,926.95	105,427.42	80,605.35	0
NY	\$95,800	774,242.89	803,897.11	427,095.25	\$95,800	774,242.89	803,897.11	427,095.25
OH	\$787,532.94	861,327.8	2,345,054.95	498,296.68	\$787,532.94	861,327.8	2,345,054.95	498,296.68
OK	\$483,477.96	716,861.92	1,874,512.8	1,249,602.19	\$483,477.96	716,861.92	1,874,512.8	1,249,602.19
OR	\$271,452.99	312,284.48	342,235.01	845,825.22	\$271,452.99	312,284.48	342,235.01	845,825.22
PA	\$31,900	187,446.52	346,601.35	27,310.6	\$31,900	187,446.52	346,601.35	27,310.6
PR	\$415,769.81	207,541.88	1,685,670.71	1,262,567.87	\$415,769.81	207,541.88	1,685,670.71	1,262,567.87
SC	\$16,289.13	238,727.3	216,960.84	61,127.2	\$16,289.13	238,727.3	216,960.84	61,127.2

Top 10 States for Sales Since 2013



DDIMAIN | Org: 901 DEMOCE | Business dt: 03/17/2014 | FY: 2013
CAPS

Loan Data



Portfolio Data

DDI Demo for Church Extension Funds
File Dashboard Window

Main Menu

- Folder Name/Address System
- Folder Extract Module
- Folder Project Management
- Folder Process Management
- Folder Financial Services
- Folder Merge Forms System
- Folder CheckWriter
- Folder Fixed Assets
- Folder FundWriter
- Folder Accounts Payable
- Folder Connect-FR
- Folder IRS Reporting System
- Folder Daily Cash Processing
- Folder Daily Cash Processing - FR
- Folder Yearbook System
- Folder Accounts Receivable
- Folder User Utilities
- Folder Processing Monitoring
- Folder Web Forms
- Folder User Documentation
- Folder Supervisor Menu

PORTFOLIO

Portfolios

Portfolio Type	Value
CD's - Non-cash	\$2,927,200
CD's - Non-cash Restricted	\$490,000
Certificates of Deposit	\$1,147,000
Comm. Paper - Non-cash	\$100,000
Common Stock	\$62,776.27
Corporate Bonds	\$9,902,000
Government Agency Notes	\$750,000
Investment Securities - Ot...	\$26,582.69
Money Mkt Cash Mgt Fds	\$2,517,668.62
Money Mkt Cash Mgt Fds - HOPE	\$7,904.42
Money Mkt Cash Mgt Fds - Third	\$2,295.13
Money Mkt Cash Mgt Fds- Site	\$2,032.81
Mutual Funds - CCF Common...	\$9,296,598.52
Mutual Funds - CCF Site Fund	\$512,461.42
Mutual Funds - Mutual Third Fund	\$129,200.53
Mutual Funds - H...	\$1,952,459.81

Portfolio Type	Value
CD's - Non-cash	\$2,053.52
CD's - Non-cash Restricted	\$438.72
Certificates of Deposit	\$308.97
Comm. Paper - Non-cash	\$0
Common Stock	\$448.36
Corporate Bonds	\$58,676.76
Government Agency Notes	\$7,461.53
Investment Securities - Other	\$0
Money Mkt Cash Mgt Fds	\$1,816.2
Money Mkt Cash Mgt Fds - HOPE	\$0
Money Mkt Cash Mgt Fds - Third	\$0
Money Mkt Cash Mgt Fds- Site	\$0
Mutual Funds - CCF Common Fund	\$78,166.51

IntRate	Type description
0	Common Stock
0.06	Money Mkt Cash Mgt Fds
0.07	Money Mkt Cash Mgt Fds
0.09	Money Mkt Cash Mgt Fds
0.1	Money Mkt Cash Mgt Fds
0.12	Money Mkt Cash Mgt Fds
0.15	CD's - Non-cash
0.17	Money Mkt Cash Mgt Fds
0.2	CD's - Non-cash
0.29	CD's - Non-cash
0.3	Certificates of Deposit
0.32	CD's - Non-cash
0.35	Certificates of Deposit
0.36	Certificates of Deposit
0.37	CD's - Non-cash

Multiple Tab Dashboard

File Dashboard Window

Portfolio
Loan Data
Investment Data
Donor/Gift Data
Investment/Loan Comparison

▼

Main Menu

- ▶ Name/Address System
- ▶ Extract Module
- ▶ Project Management
- ▶ Process Management
- ▶ Financial Services
- ▶ Merge Forms System
- ▶ CheckWriter
- ▶ Fixed Assets
- ▶ FundWriter
- ▶ Accounts Payable
- ▶ Connect-FR
- ▶ IRS Reporting System
- ▶ Daily Cash Processing
- ▶ Daily Cash Processing - FR
- ▶ Yearbook System
- ▶ Accounts Receivable
- ▶ User Utilities
- ▶ Processing Monitoring
- ▶ Web Forms
- ▶ User Documentation
- ▶ Supervisor Menu

PORTFOLIO

Portfolios

Portfolio Type	Value
CD's - Non-cash	\$2,927,200
CD's - Non-cash Restricted	\$490,000
Certificates of Deposit	\$1,147,000
Comm. Paper - Non-cash	\$100,000
Common Stock	\$62,776.27
Corporate Bonds	\$9,902,000
Government Agency Notes	\$750,000
Investment Securities - O...	\$26,582.69
Money Mkt Cash Mgt Fds	\$2,517,668.62
Money Mkt Cash Mgt Fds - HOPE	\$7,904.42
Money Mkt Cash Mgt Fds - Third	\$2,295.13
Money Mkt Cash Mgt Fds- Site	\$2,032.81
Mutual Funds - CCF Common Fund	\$9,296,598.52
Mutual Funds - CCF Site Fund	\$512,451.42
Mutual Funds - CCF Third Fund	\$129,200.53
Mutual Funds - HOPE	\$1,952,459.81

CD's - Non-cash	\$2,053.52
CD's - Non-cash Restricted	\$438.72
Certificates of Deposit	\$308.97
Comm. Paper - Non-cash	\$0
Common Stock	\$448.36
Corporate Bonds	\$58,676.76
Government Agency Notes	\$7,461.53
Investment Securities - Other	\$0
Money Mkt Cash Mgt Fds	\$1,816.2
Money Mkt Cash Mgt Fds - HOPE	\$0
Money Mkt Cash Mgt Fds - Third	\$0
Money Mkt Cash Mgt Fds- Site	\$0
Mutual Funds - CCF Common Fund	\$78,166.51

IntrRate ▼	Type description ▼
0	Common Stock
0.06	Money Mkt Cash Mgt Fds
0.07	Money Mkt Cash Mgt Fds
0.09	Money Mkt Cash Mgt Fds
0.1	Money Mkt Cash Mgt Fds
0.12	Money Mkt Cash Mgt Fds
0.15	CD's - Non-cash
0.17	Money Mkt Cash Mgt Fds
0.2	CD's - Non-cash
0.29	CD's - Non-cash
0.3	Certificates of Deposit
0.32	CD's - Non-cash
0.35	Certificates of Deposit
0.36	Certificates of Deposit

Drill Down Capability

PORTFOLIO

Portfolio
Loan Data
Investment Data
Donor/Gift Data
Investment/Loan Comparison

Portfolios
Portfolios

Type description	Face Value
CD's - Non-cash	\$2,927,200
CD's - Non-cash Restricted	\$490,000
Certificates of Deposit	\$1,147,000
Comm. Paper - Non-cash	\$100,000
Common Stock	\$62,776.27
Corporate Bonds	\$9,902,000
Government Agency Notes	\$750,000
Investment Securities - Other	\$26,582.69
Money Mkt Cash Mgt Fds	517,668.62
Money Mkt Cash Mgt Fds - HOPE	\$7,904.42
Money Mkt Cash Mgt Fds - Third	\$2,295.13
Money Mkt Cash Mgt Fds- Site	\$2,032.81
Mutual Funds - CCF Common Fund	\$9,296,598.52

CD's - Non-cash	\$2,053.52
CD's - Non-cash Restricted	\$438.72
Certificates of Deposit	\$308.97
Comm. Paper - Non-cash	\$0
Common Stock	\$448.36
Corporate Bonds	\$58,676.76
Government Agency Notes	\$7,461.53
Investment Securities - Other	\$0
Money Mkt Cash Mgt Fds	\$1,816.2
Money Mkt Cash Mgt Fds - HOPE	\$0
Money Mkt Cash Mgt Fds - Third	\$0
Money Mkt Cash Mgt Fds- Site	\$0
Mutual Funds - CCF Common Fund	\$78,166.51

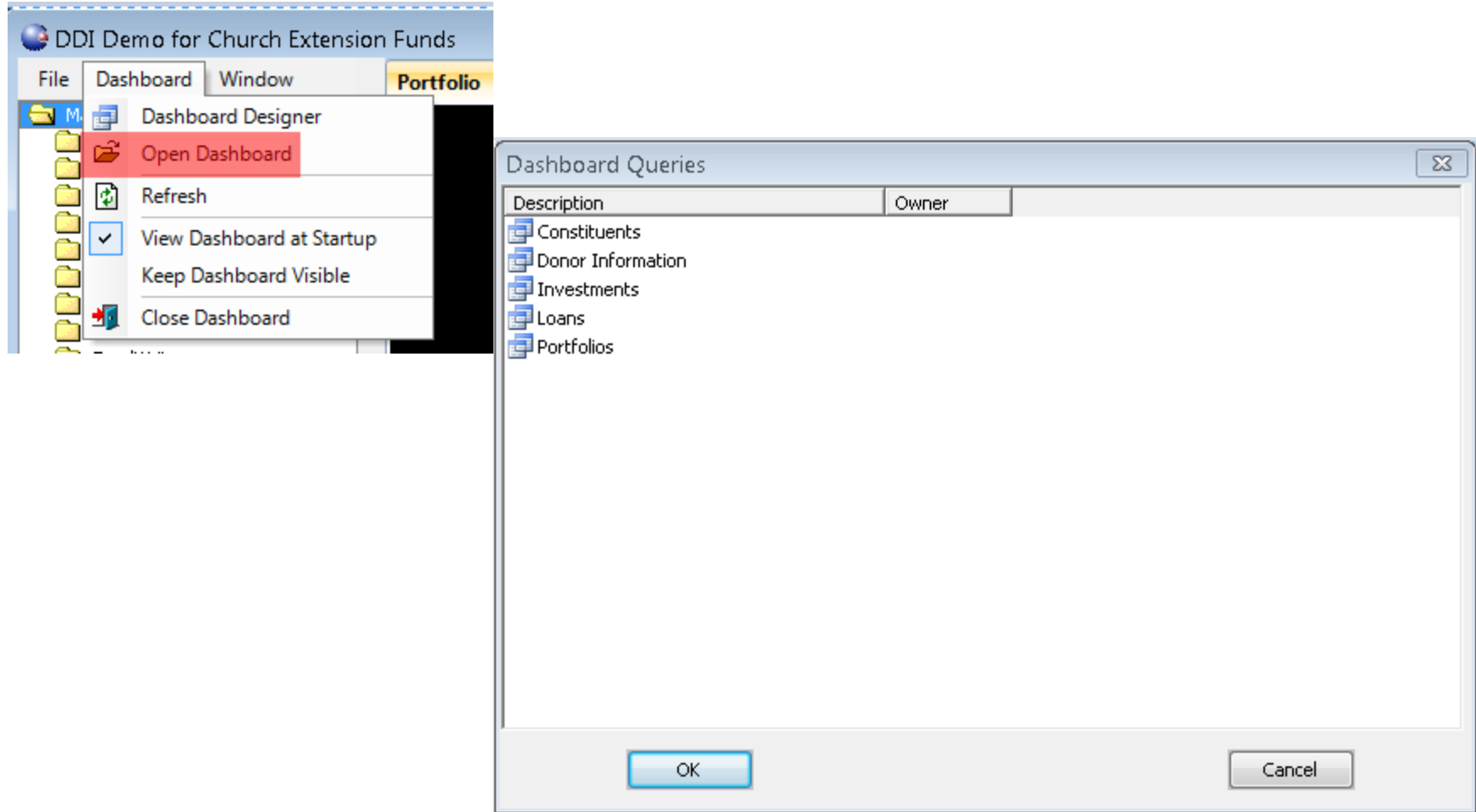
IntRate	Type description
0	Common Stock
0.06	Money Mkt Cash Mgt Fds
0.07	Money Mkt Cash Mgt Fds
0.09	Money Mkt Cash Mgt Fds
0.1	Money Mkt Cash Mgt Fds
0.12	Money Mkt Cash Mgt Fds
0.15	CD's - Non-cash
0.17	Money Mkt Cash Mgt Fds
0.2	CD's - Non-cash
0.29	CD's - Non-cash
0.3	Certificates of Deposit
0.32	CD's - Non-cash
0.35	Certificates of Deposit
0.36	Certificates of Deposit

- Fit column widths to contents
- Allow grouping
- Allow summary
- Print
- Print Preview
- Export to Excel
- Export to PDF
- Export to XML Paper Specification (XPS) document

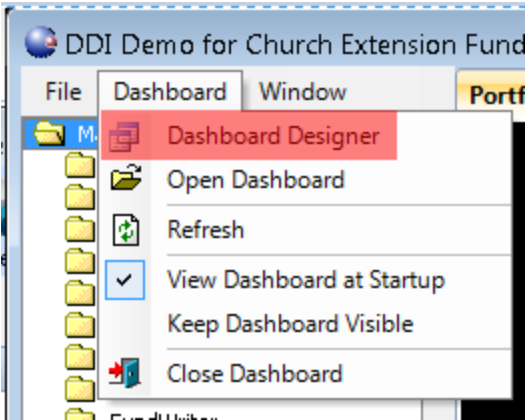
Data Extract Ability

AccrIntToDate ▼	AccrIntYTD ▼	Accrued Int ▼	Acct external ID / ▼	Acct ID ▼	Addr 1 ▼	Addr 2 ▼	Amc ^
118,105.18	0.00	0.00		900010006	9349 Greentree...	PO Box 406	2/28,
742,310.01	248.38	48.63		900010006	9349 Greentree...	PO Box 406	2/28,
3,479,140.86	0.00	0.00		990010466	4621 Manor St NE	200 W Foothill B...	2/28,
0.00	0.00	0.00		990012078	4071 Via Verona...	9440 W Elizabet...	2/28,
0.00	0.00	0.00		990012078	4071 Via Verona...	9440 W Elizabet...	2/28,
0.00	0.00	0.00		990022791	682 South St		2/28,

Unlimited Dashboards



Dashboard Designer



DDI-Connect Digital Dashboard Designer

File New Edit Refresh Delete Tabs Columns View

Toolkit

- Control Panel
- Tree View Selection Pa...
- Pivot Table
- Data Grid
- Legend
- Column 2D Chart
- Column 3D Chart
- Pie 3D Chart
- Pie 2D Chart
- Line 2D Chart
- Bar 2D Chart
- Area 2D Chart
- Doughnut 2D Chart
- Doughnut 3D Chart

Query Details Toolkit

Portfolios

Portfolio Loan Data Investment Data Donor/Gift Data Investmen

Portfolios

Value

Portfolio Type

Interest YTD

Portfolio	Value
CD's - Non-cash	\$2,927,200
CD's - Non-cash Restri...	\$490,000
Certificates of Deposit	\$1,147,000
Comm. Paper - Non-cash	\$100,000
Common Stock	\$62,776.27
Corporate Bonds	\$9,902
Government Agency No...	\$750,000
Investment Securities...	\$26,582.69
Money...	\$2,517,688.62
Money...	\$7,904.42

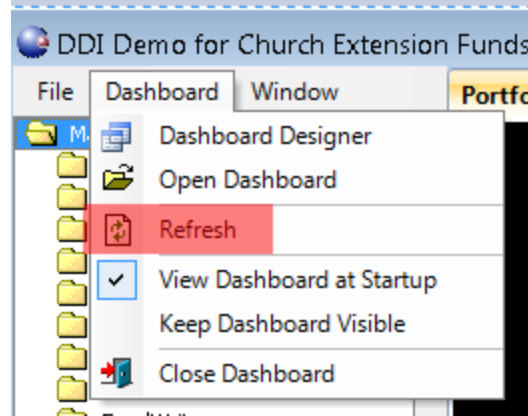
Portfolios

Portfolio	IntRate
CD's - Non-cash	0.06
CD's - Non-cash Restri...	0.07
Certificates of Deposit	0.09
Comm. Paper - Non-cash	0.1
Common Stock	0.12
Corporate Bonds	0.15
Government Agency No...	0.17
Investment Securities...	0.2



Real-Time Data Updates

- ❑ Refreshed Queries On Login
- ❑ Refreshed Queries On Demand





Low Cost

- ❑ Many dashboard solutions are very expensive to purchase. Also, those solutions will be with batched, outdated data.
- ❑ DDI has purchased the dashboard solution and configured it to be real-time inside DDI-Connect for a low monthly cost.



Advance Your Dashboard

- ❑ Combine Data Subjects
- ❑ Create your own Calculated Columns
- ❑ Create Multi-Series Graphs



How to get started?

1. Request a personalized demo (if needed)
2. Sign-up for the service
3. Receive a 2-hour training session
4. Start Creating Dashboards



Future of the Dashboard

- ❑ More Subjects
- ❑ Continued Updates
- ❑ Reporting Capabilites

Discussion, Questions, Comments



Patrick McHugh
pmchugh@ddi.org
317.713.2472